

Vice Provost & Dean of Graduate Studies Vision Seminar

Dr. Lidia Kos

Wednesday, February 15, 2023

My Background

Rio de Janeiro, Brazil
(IN)EQUITY

2nd Generation
MULTICULTURALISM

“Education is one thing no one can take away from you.”

BS, Biology, Federal University of Rio de Janeiro
RESEARCH

Ph.D., UC Berkeley, Neurobiology
INTERDISCIPLINARITY

Post-Doc, NIH, Genetics
COLLABORATION

Faculty, Florida International University
DIVERSITY, SOCIAL MOBILITY

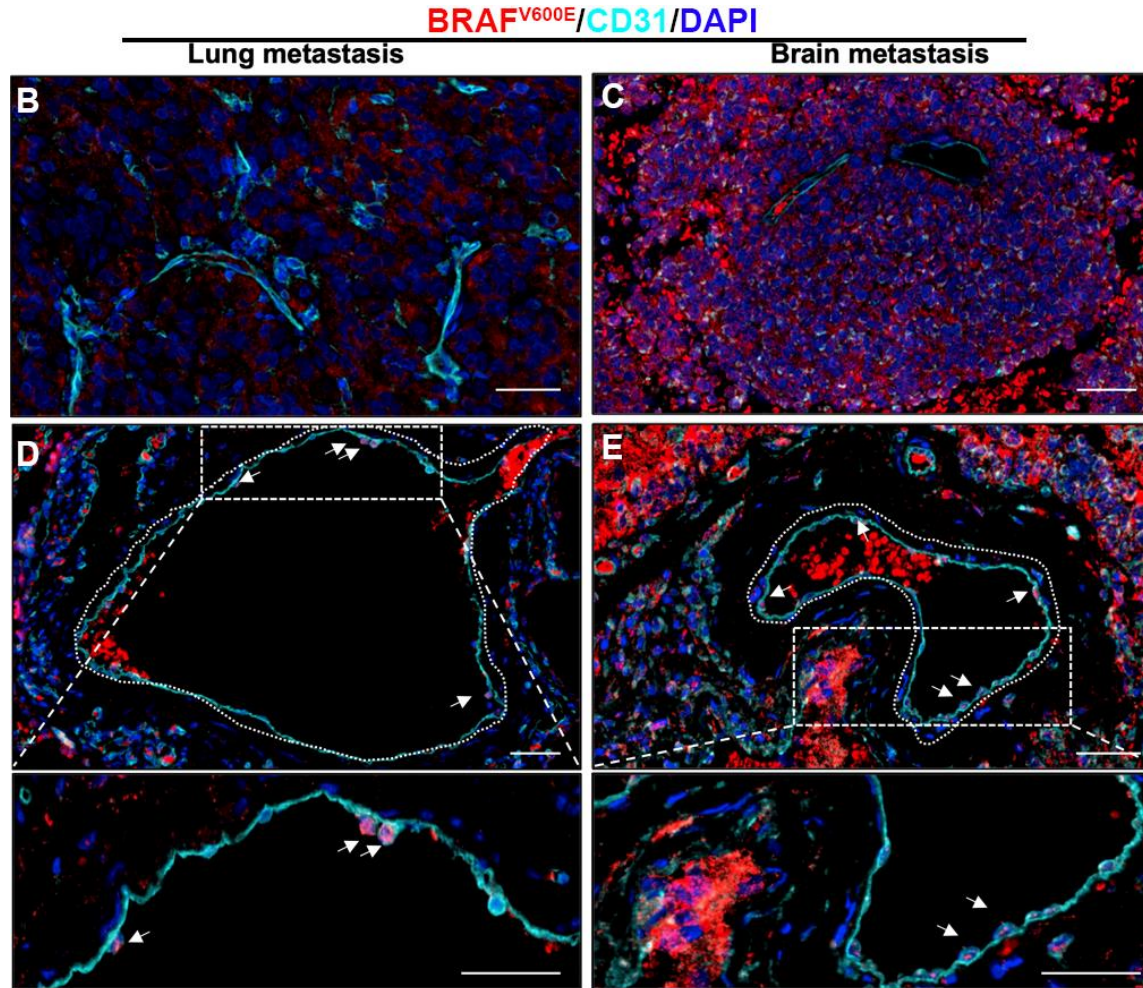
Associate Dean/Vice President, Florida International University
COMMUNICATION, TRANSPARENCY



Disseminated Cancer Cells

opportunities and challenges

Resiliency
Transformation
Innovation



Li, X., Karras, P., Torres, R., Rambow, F., van den Oord, J., Marine, J-C., Kos, L. (2020) Disseminated melanoma cells transdifferentiate into endothelial cells in intravascular niches at metastatic sites. *Cell Rep.* 31: 107765.

VISION

Graduate Division at UCR

The Graduate Division will work **collaboratively** with all stakeholders to create and promote **excellence, diversity, equity, transformation, innovation**, and a student-centered academic/personal experience in graduate education.

The vision will be achieved via:

Communication, Transparency, Partnerships, Flexibility, Empathy

Landscape of Graduate Education

opportunities and challenges

Societal perceived value of graduate education

Changes in the shape of knowledge

Advances in technology

Changes in demographics

Economic forces

Geopolitical forces

Graduate Division at UCR

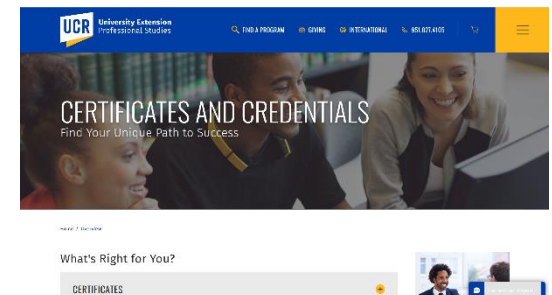
opportunities

Value, Technology and Economics

- . Accelerated pathways: BS/MS or other combined degrees
- . Partnership with local/regional employers for alignment of competencies
- . Experiential learning: shadowing, internships
- . Micro-credentials: badges
- . Stacking of micro-credentials stand in for degrees in certain areas
- . On-the-job learning as part of the curriculum
- . Life-long learning



- World AIDS Museum and Educational Center
- African American Research Library & Cultural Center
- Historic Hampton House
- Vizcaya Museum & Gardens
- Jewish Museum of Florida
- Sant La Haitian Neighborhood Center
- The Museum of Graffiti
- Stonewall National Museum & Archives
- Historic Ward Rooming House
- WPHL Miami Studies



Graduate Division at UCR opportunities

Economics, Demographics, Shape of Knowledge

- . Academic/industry partnerships
- . Professional master's/doctorates
- . Novel mentorship models
- . Interdisciplinary/transdisciplinary approaches
- . Promotion of a culture of inclusivity



About A2i

To transform graduate education, Accelerate to Industry (A2i) is a bold, new approach to workforce readiness. With A2i, graduate students can explore the ample employment opportunities with industry. Students can also develop the business, leadership, and communication skills that companies seek.

Accelerate to Industry (A2i) Modules



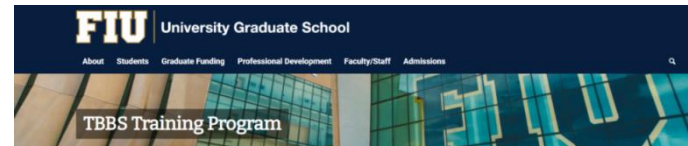
DOCTORATE IN BUSINESS ADMINISTRATION (DBA)

The Chapman Graduate School of Business offers a Doctorate in Business Administration (DBA). This program is offered as a track under the Ph.D. degree and is designed for working senior-level professionals who desire to achieve a doctoral degree in business while controlling their work responsibilities and careers. The DBA will equip you with practical oriented research to fulfill leadership or other strategic responsibilities. You will obtain the advanced knowledge to address, change and quickly solve complex business issues.

In addition to sharpening your critical and analytical skills, the DBA will equip you with the tools to advance your career in leadership and management at the executive levels of business. The DBA represents the highest level of academic achievement in business administration.

Apply now!

- Overview
- Curriculum
- Faculty
- Program Costs
- Application & Requirements
- Financial Aid
- Is a DBA or PhD best for you?
- FAQs



Transdisciplinary Biomolecular and Biomedical Sciences (TBBS) Training Program

The Transdisciplinary Biomolecular and Biomedical Sciences (TBBS) Program, funded by the National Institute of Health (NIH), aims to provide fellows with an interdisciplinary and collaborative setting for doctoral training in biomedical research, implement effective evidence-based strategies for doctoral research training, and to prepare fellows for diverse roles in the biomedical workforce through the participation in various workshops and events.



NSF Bridge to the Doctorate Fellowship

NSF Bridge to the Doctorate Fellowship Program

NSF Florida Georgia Lois Stokes Alliance for Minority Participation (FGLSAMP) Bridge to the Doctorate at Florida International University (FIU) provides a unique opportunity to promising underrepresented (Hispanic/Latino and African-American/Black) minority students to successfully complete science, technology, engineering and mathematics (STEM) PhD degree programs.

The Bridge to the Doctorate Fellowship Program, funded by the National Science Foundation, is committed to increasing the quality and quantity of underrepresented minority students successfully completing science, technology, engineering and mathematics (STEM) PhD degree programs. Recognizing the importance of increasing the participation and success of underrepresented students for enhancing innovation, and improving the nation's global economic leadership, the program helps students successfully transition into post-graduate careers within industry, government, and academic through funding and professional development support.

BD Success

Marcela Jaramillo



From Immigrant to NSF Graduate Research Fellow



Design & Community

Building a sense of community for doctoral students: DEI launches its inaugural Fellowship Cohort with 15 students

Landscape of Graduate Education challenges

Mental Health/Wellness

Ensure that campus strategic plans regarding mental health and well-being address the unique needs of graduate students.

Examine ways to mitigate the impact of hyper-competitive campus cultures, recognizing the toll this may take on graduate faculty, staff, and students.

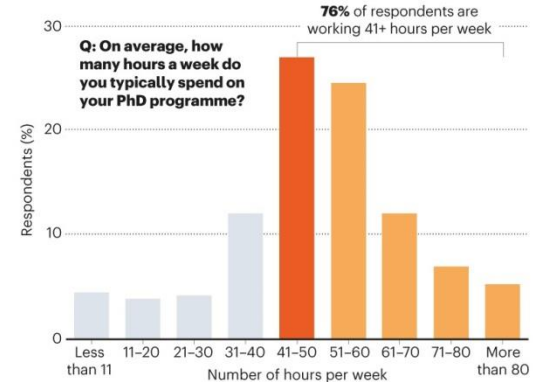
Create a taskforce or process to investigate how tenure, promotion and other faculty reward systems might be modified to encourage academic excellence and work/life balance.

Prioritize diversity, equity and inclusion, creating campus spaces to acknowledge and discuss challenges and crises experienced directly by minoritized graduate students.

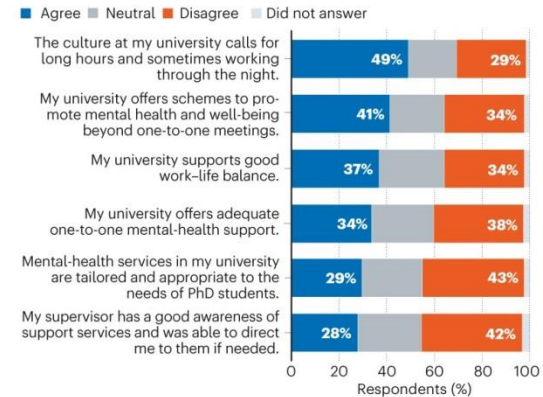


OVEREXTENDED AND STRESSED

Long hours in the laboratory and other demands have taken a toll on PhD students' well-being and mental health.



Q: Do you agree or disagree with the following statements?



36% of respondents have sought help for anxiety or depression caused by PhD studies. One-third of them sought help from places other than their institution, and 18% sought help at their institution but didn't feel supported.



Landscape of Graduate Education

opportunities and challenges

Geopolitics and Economics

Reliance on small number of countries:

Immigration laws, natural disasters,
political and economic turmoil, pandemics

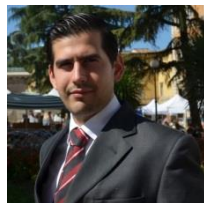
Competition with other countries:

Canada, China, Singapore, UAE

- . Intentional (virtual) recruitment (with Enrollment Management)
- . Better integration of international students in the institution and community (with ISSS)
- . More support for future career opportunities (with Career Services)
- . Financial incentives (with Student Affairs/housing)

Dual PhD degree - FIU & University of Florence

2 PhDs : FIU Earth and Environment, U Florence Civil Engineering
2 major professors and research groups that collaborate on flood modeling



Francisco Pena

Nations that sent the most students to the US in 2019-20

Total international students	1,075,496	100%
China	372,532	34.6%
India	193,124	18%
South Korea	49,809	4.6%
Saudi Arabia	30,957	2.9%
Canada	25,992	2.4%
Vietnam	23,777	2.2%
Taiwan	23,724	2.2%
Japan	17,554	1.6%
Brazil	16,671	1.6%
Mexico	14,348	1.3%

Source: Institute of International Education, Open Doors Report on Inter-national Educational Exchange

Country	Percent change in applications from 2019-20 to 2020-21
China	-18
South Korea	3
Vietnam	5
United Arab Emirates	10
Nigeria	12
Canada	22
United Kingdom	23
India	28
Pakistan	37
Brazil	41

Data reflect unique applicants by country of residence, with the top 10 countries by applicant volume represented.

Source: Common App

