

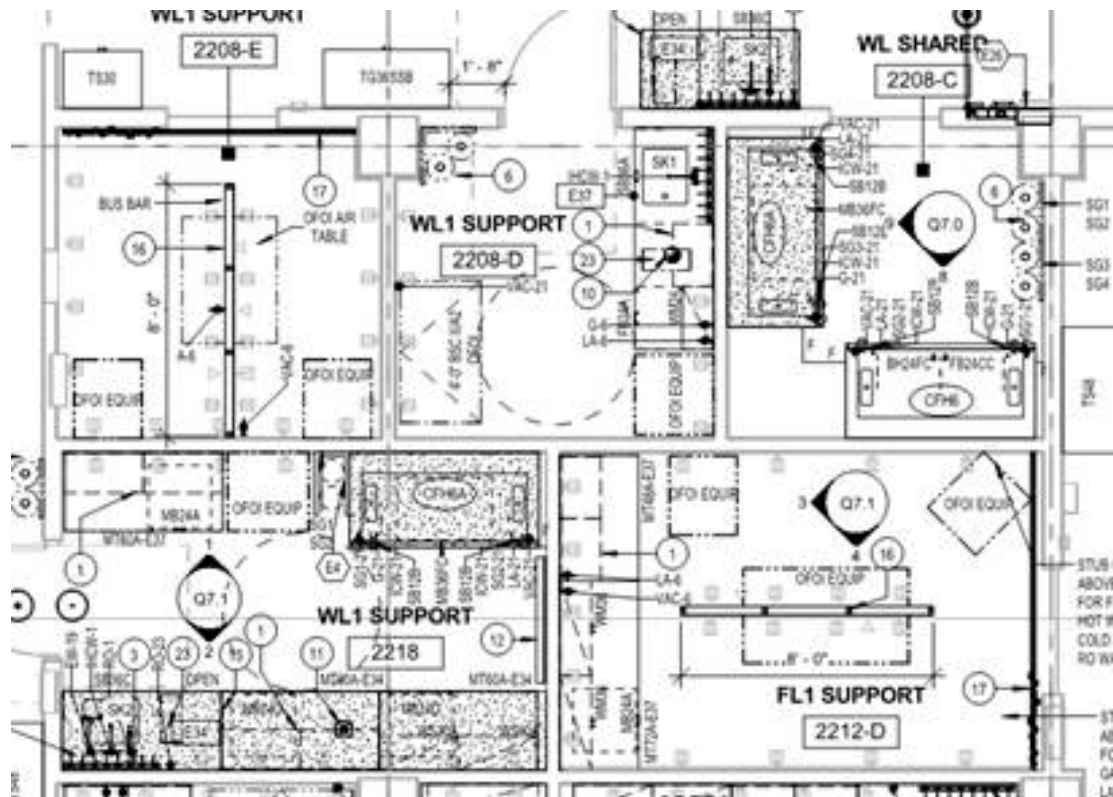
**MRB1 Space Assignments - Request for Expressions of Interest
Questions and Answers
June 21, 2017**

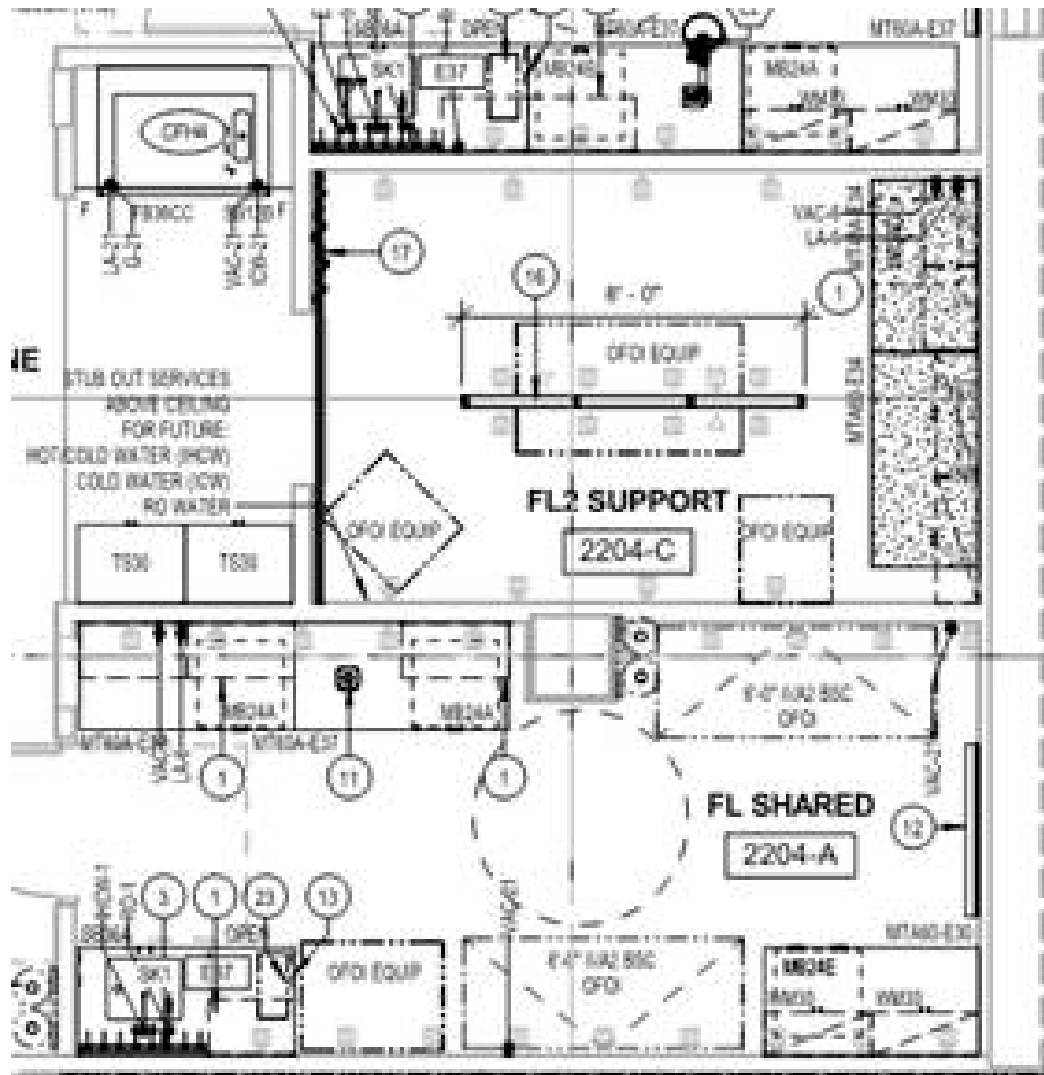
Topics / Questions	Answers
<p>1. <i>Who are the members on the MRB1 Task Force?</i></p>	<p>Cindy Larive – Provost (Chair) Deborah Deas – Dean, SOM Milagros Peña – Dean CHASS Kathryn Uhrich Dean, CNAS Sharon Walker – Interim Dean, BCOE Martin Garcia Castro – Assoc. Professor, Biomedical Sciences Mike Pazzani – VC Research & Economic Development (RED) Jeff Kaplan – Assoc. VC Capital Asset Strategies Barbara Lloyd – Office of VC for Planning & Budget</p>
<p>2. <i>Has a common theme for MRB1 been selected to facilitate donor funding?</i></p>	<p>The mission of MRB1 is to facilitate multi-disciplinary research at the intersection of chemical/life sciences, medicine, engineering and computation.</p> <p>One or more additional common/cohesive themes may emerge over time, in part as an outgrowth of the current RFEI process.</p>
<p>3. <i>Who will be responsible for the relocation of equipment i.e. centrifuges, etc. Can equipment that is difficult to move be replaced, instead of being relocated?</i></p>	<p>A relocation plan will be identified once the occupants of the building have been identified. Generally, there are not allowances for equipment replacement. Exceptions may be considered on a case-by-case basis.</p>
<p>4. <i>What equipment will be provided in lab support rooms?</i></p>	<p>A variety of standard equipment items, such as autoclaves, dish washers, and cold rooms will be available in support rooms distributed throughout the building.</p> <p>Additional equipment specific to a given research theme and/or group will need to be provided by the PIs.</p>
<p>5. <i>Will the building be outfitted with furniture?</i></p>	<p>Occupied spaces will be outfitted with standard furniture appropriate for the functions of the given spaces.</p>

Topics / Questions	Answers
<p>6. <i>Should statisticians be included in the occupancy demographic, as they interact with the research community?</i></p>	<p>To the extent a proposed research team includes statisticians, such proposed team members should be identified in the Expression of Interest Letter. Computational lab space can be accommodated in MRB1.</p>
<p>7. <i>How does one go about outlining multiple team affiliations in the expression of interest?</i></p>	<p>See section 5.5 of the RFEI, which states: “List all other Expression of Interest Letters submitted in response to this RFEI in which participating Researchers and Support Team members are included. Describe the relationship of this Response to any such Other Responses.” A narrative, list or table, or combination thereof, providing the above information would be acceptable.</p>
<p>8. <i>Can information about potential respondents to the RFEI be posted?</i></p>	<p>We do not have a process in place for releasing this information and do not plan to do so.</p>
<p>9. <i>How does one find out about the various teams that have expressed interest?</i></p>	<p>The Provost facilitated meetings on June 1st - 2nd that provided opportunities to hear from potential teams with an interest in MRB1. In addition, the Deans and Department Chairs may have information they could share on a case-by-case basis. Existing cross-departmental working groups also have hosted various meetings, as well.</p>
<p>10. <i>Will the responses be posted on the Provost’s website.</i></p>	<p>Responses will be reviewed by the Task Force. They will not be posted publicly during the review period. Selected summary information, of a non-proprietary nature, may be published at some future time, but those details have not been determined, pending receipt of responses.</p>
<p>11. <i>What is the approximate assignable square feet for the Wet 2 and Flex 1 modules?</i></p>	<p>The individual lab bays in the open ballroom vary in size, but range from ~270 SF to 450 SF. The support spaces (dedicated and shared) also vary in size, ranging from ~100 SF to 200 SF.</p> <p>Please refer to the attached floorplans for individual areas.</p>

Topics / Questions	Answers
<p>12. What is the difference between 'shared' and 'support' rooms? Are they different designs? Is one more flexible than the other? Are the support rooms essentially empty and then fitted according to who's moving?</p>	<p>Dedicated Support is space that was presumed would be assigned to a single PI Group and for activities such as BSL2 compliant procedures or tissue culture, media preparation, or unique instrumentation. Shared Support spaces are designed to be flexible and to accommodate multiple needs that might be shared across PI Groups.</p>
	<p>Both types of space have room for OFOI (Owner Furnished Owner Installed) equipment. The partial lab plans are the most fully detailed and show best what is in each of the rooms and the spaces where OFOI equipment might go. Two examples are available below.</p>

Sample Partial Lab Plans





Attachment